



ISSUE DATE AUG-09
 DATA SHEET NO
 USA-OEM-G2

AT A GLANCE

FEATURES

- Instruments available for most outboards, stern drives and gasoline-powered inboards
- Scratch-resistant domed glass lenses
- Enhanced illumination: through-dial lighting for excellent readability at night.
- Low-range speedometers
- U.S. and metric scales, with ISO symbols, where appropriate



**THE AMEGA RANGE OF INSTRUMENTS
 (OEM VERSION)**

TECHNICAL DATA

Smart white and red graphics on a black dial background, these very low profile bezels follow the curve of the lense to eliminate water trapping. Design with domed glass sheds water and resists scratching.



For Sender information refer to the Veethree Sender Code data sheet or visit the Veethree website at www.v3instruments.com

Actual hole sizes: Nominal 2"=2.13/2.16" except Hourmeter =2.00/2.06". Nominal 3"=3.41/3.44".

Request Dimension data sheet for complete dimension data.



AMEGA INSTRUMENTS

ORDER INFORMATION	DIAL RANGE			BLACK BEZEL STANDARD LENS	BLACK BEZEL ANTI-FOG LENS	SS DOMED BZL STANDARD LENS
Blank Gauge	2"	N/A	N/A	57406	-	86860
Digital Depth (display head only)	2"	2.5 - 200 Ft.	-	-	-	67395
Engine Monitors	2" 2"	Suzuki Evinrude	Sumitomo Deutsch	65668BMD 65205	65668BMDF 65205F	65668SS -
Fuel Level	2" 2" 2"	E-F E-F E-F	Stud Deutsch Metri-Pak	57902 78000PDNB 78000PMNB	57902F 78000PDFB 78000PMFB	59597 780001PDNB 780001PMNB
Hourmeter	2"	10,000 HRS	1/4" Spade	84760	84760F	73760
Oil Pressure	2" 2" 2" 2" 2"	0-80 PSI 0-80 PSI 0-80 PSI 0-100 PSI 0-100 PSI	Stud Deutsch Metri-Pak Stud Deutsch Metri-Pak	57903 780002PDNB 780002PMNB 57929 780004PDNB 780004PMNB	57903F 780002PDFB 780002PMFB 57929F 780004PDFB 780004PMFB	59595 780003PDNB 780003PMNB 62857 780005PDNB 780005PMNB
Speedometer (display head only)	3" 3" 3" 3" 3"	35 MPH 50 MPH 65 MPH 80 MPH 100 MPH	N/A N/A N/A N/A N/A	58342 57898 57900 57899 61537	58342F 57898F 57900F 57899F -	- - 59593 59594 -
Tachometer - Outboards and 4 cycle gas	3" 3" 3" 3"	6000 RPM 7000 RPM 7000 RPM 7000 RPM	Stud Stud Deutsch Metri-Pak	57896 58255 780020PDNB 780020PMNB	- 58255F 780020PDFB 780020PMFB	59592 61492 780021PDNB 780021PMNB
Tachometer - Systems Check - Evinrude	3"	7000 RPM	Deutsch	58935	58935F	62867
Tach / Hourmeter - Outboards and 4 cycle gas	3" 3" 3"	6000 RPM 6000 RPM 6000 RPM	Stud Deutsch Metri-Pak	57897 780022PDNB 780022PMNB	57897F 780022PDFB 780022PMFB	59591 780023PDNB 780023PMNB
Trim - Evinrude / Johnson / Suzuki 4 stroke '02 & on	2" 2" 2"	UP - DN UP - DN UP - DN	Stud Deutsch Metri-Pak	58431 780012PDNB 780012PMNB	58431F 780012PDFB 780012PMFB	61583 780013PDNB 780013PMNB
Trim - Honda	2"	UP - DN	Stud	-	63530F	-
Trim - Mariner / Mercury / Volvo / Yamaha '01 & on	2" 2" 2"	UP - DN UP - DN UP-DN	Stud Deutsch Metri-Pak	57905 780018PDNB 780018PMNB	57905F 780018PDFB 780018PMFB	59600 780019PDNB 780019PMNB
Voltmeter	2" 2" 2"	8 - 18 V 8 - 18 V 8 - 18 V	Stud Deutsch Metri-Pak	57901 780010PDNB 780010PMNB	57901F 780010PDFB 780010PMFB	59598 780011PDNB 780011PMNB
Water Pressure (display head only)	2" 2" 2" 2" 2"	15 PSI 30 PSI 40 PSI 45 PSI 60 PSI	N/A N/A N/A N/A N/A	59630 61238 67434 61012 58710	59630F 58392F - - -	62846 62312 67374 - -
Water Pressure Kit	2"	30 PSI	N/A	61238K	62850K	62312K
Water Temperature - Sterndrive	2" 2" 2"	120F - 240F 120F - 240F 120F - 240F	Stud Deutsch Metri-Pak	57904 780006PDNB 780006PMNB	57904F 780006PDFB 780006PMFB	59846 780007PDNB 780007PMNB
Water Temperature - Outboard (display head only)	2" 2" 2"	C - H C - H C - H	Stud Deutsch Metri-Pak	58862 780008PDNB 780008PMNB	58862F 780008PDFB 780008PMFB	62856 780009PDNB 780009PMNB



THE ARCTIC RANGE OF INSTRUMENTS

TECHNICAL DATA

Stylish white bezel design, black on white graphics, accurate and reliable, these tough instruments look good on all types of boats. Domed glass sheds water and resists scratching.



For Sender information refer to the Veethree Sender Code data sheet or visit the Veethree website at www.v3instruments.com

Actual hole sizes: Nominal 2"=2.13/2.16" except Hourmeter =2.00/2.06". Nominal 3"=3.41/3.44".

Request Dimension data sheet for complete dimension data.

ISSUE DATE AUG-09
DATA SHEET NO USA-G

AT A GLANCE

FEATURES

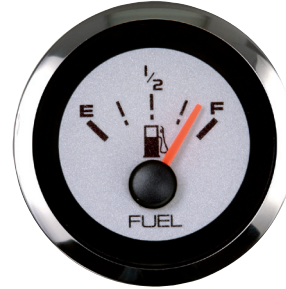
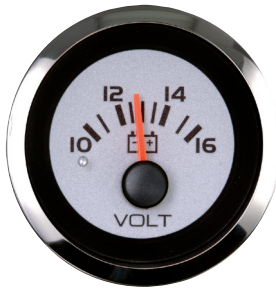
- Instruments available for most outboards, stern drives and gasoline-powered inboards
- Scratch-resistant domed glass lenses
- Enhanced illumination: through-dial and perimeter lighting for excellent readability at night.
- Low-range speedometers
- U.S. and metric scales, with ISO symbols, where appropriate
- Optional add-on square bezels for modular appearance

ARCTIC INSTRUMENTS

ORDER INFORMATION	SIZE	DIAL RANGE	SENDER CODE	PART NO.
Ammeter	2"	60-0-60	F	68364P
Fuel Gauge	2"	(E-F)	N/R	68365P
Hourmeter	2"	10,000 hrs		68366P
Eng Oil Pressure gauge 0-80 PSI	2"	0-80 PSI	C	68367P
Eng Oil Pressure gauge 0-100 PSI	2"	0-100 PSI	C	68368P
Water Pressure Kits (Outboard): (Each kit includes fittings and 20 feet of tubing).	2"	0-40 PSI	WP(included)	68369P
Speedo Kit 0-35 MPH (inc Pitot and Hose)	3"	5-35 MPH	G (included)	68370P
Speedo Kit 0-65 MPH (inc Pitot and Hose)	3"	10-65 MPH	G (included)	68371P
Speedo Kit 0-80 MPH (inc Pitot and Hose)	3"	20-80 MPH	G (included)	68372P
Tachometer 0-4000 RPM Diesel Alt	3"	0-4000 RPM	ALTERNATOR	68373P
Tachometer 0-7000 RPM	3"	0-7000 RPM	O/B Alt or Coil	68374P
Tach/Hourmeter 0-7000 RPM Petrol/Gas	3"	0-7000 RPM	O/B Alt or Coil	68375P
I/O, I/B Water Temp Gauge	2"	120-240°F	D	68376P
Outboard Water Temp Kit (Cold-Hot) - includes "J"	2"	100-220°F	J (included)	68377P
Trim, Evinrude/Johnson O/B	2"	UP-DOWN	Eng Mfr supply	68378P
Trim, Honda	2"	UP-DOWN	Eng Mfr supply	68379P
Trim, Mariner/Merc, Yamaha 2001	2"	UP-DOWN	Eng Mfr supply	68380P
Trim, Yamaha Outboards, pre 2001	2"	UP-DOWN	Eng Mfr supply	68381P
12v Voltmeter, 8-18 Volts	2"	8-18 VDC	N/R	68383P
12 Battery Condition Indicator	2"		N/R	68384P
System Check - Evinrude/Johnson			Eng Mfr supply	68385P
System Check - Suzuki				68386P
Instrument Set "OUTBOARD"	4 Gauge set			68387P
Instrument Set "INBOARD/STERNDRIVE"	6 Gauge set			68388P

ARCTIC INSTRUMENTS

OPTIONAL ACCESSORIES	PART NO.
2" Aircraft Style Bezel	IA65476
3" Aircraft Style Bezel	IA65477
12-Volt Light & Socket (wedge base)	IA62995
Panel Mount AGC-type Fuse Holder	IA17537
Tubing for Pitot Tube, 100-foot Coil	56353P
Tach Harness, pre-1996 OMC (3-wire)	IH14767
Tach Harness, Merc/Mariner (5-wire)	IH15105
Pack O' Pitots (12 Pitot tubes in Shipper/P.O.P. Display)	59677P
Veethree Electrical Gauge Tester (Works on all Veethree electrical instruments, instructions provided)	55920

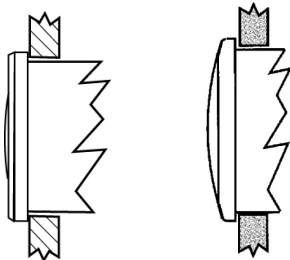


ARGENT PRO RANGE OF INSTRUMENTS (OEM VERSION)

TECHNICAL DATA

Black graphics on a silver background, pointer has black hub with fade resistant acrylic orange staff. Pointer is internally illuminated for excellent night visibility. Dial graphics light red when illuminated and anti scratch glass lens with fog resistant coating and polished stainless steel bezel.

The Argent series gauge is also available in plug-n-play design with connectors molded in the back of the gauge for a clean, simple electrical connection, reducing the possibility of wiring errors. Choose Deutsch, Packard Metri-Pack or traditional stud configurations. (See table)



Elite Bezel Profile Low Bezel Profile

For Sender information refer to the Veethree Sender Code data sheet or visit the Veethree website at www.v3instruments.com

Actual hole sizes: Nominal 2" = 2.13" / 2.16" except Hourmeter = 2.00/2.06". Nominal 3" = 3.41/3.44". Nominal 5" = 4.375"

Request Dimension data sheet for complete dimension data.

ISSUE DATE AUG-09

DATA SHEET NO

USA-OEM-G13

AT A GLANCE

FEATURES

- Light pipe, directing light evenly behind the translucent dial as well as into the pointer staff, provides the best in night visibility
- Easy to read black graphics on a silver dial background
- Convex, Domed glass lenses are scratch resistant. Anti-fog coated lenses are also available
- Low profile bezels follow the curvature of the lens, with no 'lip' to trap and hold water
- Internally shielded to prevent magnetic interference
- Silicone dampening eliminates pointer

PAGE 1 OF 3

ORDER INFORMATION	SIZE	DIAL RANGE	CONNECTOR TYPE	SS DOMED BZL STANDARD LENS	SS DOMED BZL ANTI-FOG LENS	SS ELITE BZL STANDARD LENS	SS ELITE BZL ANTI-FOG LENS
Digital Depth* (display head only)	2"	2.5 - 200 Ft.	Wires Only	67412	67412	67413	67413
Engine Monitors	2" 2"	Suzuki Evinrude/Sys Chk	Sumitomo Deutsch	65694SS 65528SS	65694SSF 65528SSF	65694SE 65528SE	65694SEF 65528SEF
Engine Synch Gauge (display head only)	2"	Port-Stbd	Stud	65522SS	65522SSF	65522SE	65522SEF
Fuel Level	2" 2" 2"	E-F E-F E-F	Stud Deutsch Metri-Pak	65524SS 780073PDNB 780073PMNB	65524SSF 780073PDFB 780073PMFB	65524SE 780238PDNB 780238PMNB	65524SEF 780238PDFB 780238PMFB
Multi-Function 4 in 1, Fuel, Volt, 80PSI, 240F	5" 5" 5"	Includes Volt Fuel, Oil PSI and Water Temp	Stud Deutsch Metri-Pak	65520SS 780426PDNB 780426PMNB	65520SSF 780501PDFB 780501PMFB	65520SE 780502PDNB 780502PMNB	65520SEF 780503PDFB 780503PMFB
Oil Pressure	2" 2" 2" 2" 2" 2"	0-80 PSI 0-80 PSI 0-80 PSI 0-100 PSI 0-100 PSI 0-100 PSI	Stud Deutsch Metri-Pak Stud Deutsch Metri-Pak	65526SS 780075PDNB 780075PMNB 65525SS 780074PDNB 780074PMNB	65526SSF 780075PDFB 780075PMFB 65525SSF 780074PDFB 780074PMFB	65526SE 780240PDNB 780240PMNB 65525SE 780239PDNB 780239PMNB	65526SEF 780240PDFB 780240PMFB 65525SEF 780239PDFB 780239PMFB
Speedometer (display head only) for pitot tube	3" 3" 3" 5" 5"	50 MPH 50 MPH 70 MPH 70 MPH 90 MPH	N/A N/A N/A N/A N/A	65529SS 65530SS 65531SS 65532SS 65534SS	65529SSF 65530SSF 65531SSF 65532SSF 65534SSF	65529SE 65530SE 65531SE 65532SE 65534SE	65529SEF 65530SEF 65531SEF 65532SEF 65534SEF
Tachometer - Outboards and 4 cycle gas I/O & Inboards	3" 3" 3" 5" 5"	0-7000 RPM 0-7000 RPM 0-7000 RPM 0-7000 RPM 0-7000 RPM	Stud Deutsch Metri-Pak Stud Deutsch Metri-Pak	65535SS 780077PDNB 780077PMNB 65536SS 780238PDNB 780238PMNB	65535SSF 780077PDFB 780077PMFB 65536SSF 780238PDFB 780238PMFB	65535SE 780245PDNB 780245PMNB 65536SE 780246PDNB 780246PMNB	65535SEF 780245PDFB 780245PMFB 65536SEF 780246PDFB 780246PMFB
Tachometer - Diesel Alternator	3" 3" 3" 5" 5" 5"	0-4000 RPM 0-4000 RPM 0-4000 RPM 0-4000 RPM 0-4000 RPM 0-4000 RPM	Stud Deutsch Metri-Pak Stud Deutsch Metri-Pak	65537SS 780078PDNB 780078PMNB 65538SS 780234PDNB 780234PMNB	65537SSF 780078PDFB 780078PMFB 65538SSF 780234PDFB 780234PMFB	65537SE 780241PDNB 780241PMNB 65538SE 780242PDNB 780242PMNB	65537SEF 780241PDFB 780241PMFB 65538SEF 780242PDFB 780242PMFB
Tachometer - Mag pick up	3" 3" 3" 5" 5" 5"	0-4000 RPM 0-4000 RPM 0-4000 RPM 0-4000 RPM 0-4000 RPM 0-4000 RPM	Stud Deutsch Metri-Pak Stud Deutsch Metri-Pak	65539SS 780235PDNB 780235PMNB 65540SS 780236PDNB 780236PMNB	65539SSF 780235PDFB 780235PMFB 65540SSF 780236PDFB 780236PMFB	65539SE 780243PDNB 780243PMNB 65540SE 780244PDNB 780244PMNB	65539SEF 780243PDFB 780243PMFB 65540SEF 780244PDFB 780244PMFB
Tach / Hourmeter - Outboards and 4 cycle gas I/O & Inboard	3" 3" 3" 5" 5" 5"	0-7000 RPM 0-7000 RPM 0-7000 RPM 0-7000 RPM 0-7000 RPM 0-7000 RPM	Stud Deutsch Metri-Pak Stud Deutsch Metri-Pak	65545SS 780079PDNB 780079PMNB 65546SS 780237PDNB 780237PMNB	65545SSF 780079PDFB 780079PMFB 65546SSF 780237PDFB 780237PMFB	65545SE 780251PDNB 780251PMNB 65546SE 780252PDNB 780252PMNB	65545SEF 780251PDFB 780251PMFB 65546SEF 780252PDFB 780252PMFB
Tach / Hourmeter - Diesel Alternator	3" 3" 3" 5" 5" 5"	0-4000 RPM 0-4000 RPM 0-4000 RPM 0-4000 RPM 0-4000 RPM 0-4000 RPM	Stud Deutsch Metri-Pak Stud Deutsch Metri-Pak	65541SS 780230PDNB 780230PMNB 65542SS 780231PDNB 780231PMNB	65541SSF 780230PDFB 780230PMFB 65542SSF 780231PDFB 780231PMFB	65541SE 780247PDNB 780247PMNB 65542SE 780248PDNB 780248PMNB	65541SEF 780247PDFB 780247PMFB 65542SEF 780248PDFB 780248PMFB
Tach / Hourmeter - Mag pick up	3" 3" 3" 5" 5" 5"	0-4000 RPM 0-4000 RPM 0-4000 RPM 0-4000 RPM 0-4000 RPM 0-4000 RPM	Stud Deutsch Metri-Pak Stud Deutsch Metri-Pak	65543SS 780232PDNB 780232PMNB 65544SS 780233PDNB 780233PMNB	65543SSF 780232PDFB 780232PMFB 65544SSF 780233PDFB 780233PMFB	65543SE 780249PDNB 780249PMNB 65544SE 780250PDNB 780250PMNB	65543SEF 780249PDFB 780249PMFB 65544SEF 780250PDFB 780250PMFB

Trim - Evinrude / Johnson / Suzuki 4 Stroke '02 & on	2"	UP-DN	Stud	65547SS	65547SSF	65547SE	65547SEF
	2"	UP-DN	Deutsch	780082PDNB	780082PDFB	780255PDNB	780255PDFB
	2"	UP-DN	Metri-Pak	780082PMNB	780082PMFB	780255PMNB	780255PMFB
Trim - Honda	2"	UP-DN	Stud	65549SS	65549SSF	65549SE	65549SEF
Trim - Mariner / Mercury / Volvo DP & SX, Yamaha 2001 & on	2"	UP-DN	Stud	65548SS	65548SSF	65548SE	65548SEF
	2"	UP-DN	Deutsch	780083PDNB	780083PDFB	780743PDNB	780743PDFB
	2"	UP-DN	Metri-Pak	780083PMNB	780083PMFB	780743PMNB	780743PMFB
Voltmeter	2"	8 - 18 V	Stud	65550SS	65550SSF	65550SE	65550SEF
	2"	8 - 18 V	Deutsch	780076PDNB	780076PDFB	780254PDNB	780254PDFB
	2"	8 - 18 V	Metri-Pak	780076PMNB	780076PMFB	780254PMNB	780254PMFB
Water Pressure (display head only)	2"	30 PSI	N/A	65551SS	65551SSF	65551SE	65551SEF
Water Temperature - I/O and Inboards	2"	120F - 240F	Stud	65553SS	65553SSF	65553SE	65553SEF
	2"	120F - 240F	Deutsch	780080PDNB	780080PDFB	780253PDNB	780253PDFB
	2"	120F - 240F	Metri-Pak	780080PMNB	780080PMFB	780253PMNB	780253PMFB

* Should be used with transducer part number 67309



ISSUE DATE AUGUST-09
DATA SHEET NO USA-G

AT A GLANCE

FEATURES

- Instruments available for most outboards, stern drives and gasoline-powered inboards
- Scratch-resistant domed glass lenses
- Perimeter lighting for excellent readability at night.
- U.S. and metric scales, with ISO symbols, where appropriate
- Optional add-on square bezels for modular appearance



THE ECLIPSE RANGE OF INSTRUMENTS

TECHNICAL DATA

Smart white and blue graphics on a black dial background, these very low profile bezels follow the curve of the lense to eliminate water trapping. Design with domed glass sheds water and resists scratching.



For Sender information refer to the Veethree sender Code data sheet or visit the Veethree website at www.v3instruments.com

Actual hole sizes: Nominal 2"=2.13/2.16" except Hourmeter =2.00/2.06". Nominal 3"=3.41/3.44".

Request Dimension data sheet for complete dimension data.

ECLIPSE INSTRUMENTS

ORDER INFORMATION	SIZE	DIAL RANGE	SENDER CODE	PART NO.
Ammeter	2"	60-0-60	F	68389P
Fuel Gauge	2'	(E-F)	N/R	68390P
Hourmeter	2'	10,000 hrs		68391P
Eng Oil Pressure gauge 0-80 PSI	2"	0-80 PSI	C	68392P
Eng Oil Pressure gauge 0-100 PSI	2"	0-100 PSI	C	68393P
Water Pressure Kits (Outboard): (Each kit includes fittings and 20 feet of tubing).	2"	0-40 PSI	WP (included)	68394P
Speedo Kit 0-35 MPH (inc Pitot and Hose)	3"	5-35 MPH	G (included)	68395P
Speedo Kit 0-65 MPH (inc Pitot and Hose)	3"	10-65 MPH	G (included)	68396P
Speedo Kit 0-80 MPH (inc Pitot and Hose)	3"	20-80 MPH	G (included)	68397P
Tachometer 0-4000 RPM Diesel Alt	3"	0-4000 RPM	ALTERNATOR	68398P
Tachometer 0-7000 RPM	3"	0-7000 RPM	O/B Alt or Coil	68399P
Tach/Hourmeter 0-7000 RPM Petrol/Gas	3"	0-7000 RPM	O/B Alt or Coil	68400P
I/O, I/B Water Temp Gauge	2"	120-240°F	D	68401P
Outboard Water Temp Kit (Cold-Hot) - includes "J"	2"	100-220°F	J (included)	68402P
Trim, Evinrude/Johnson O/B	2"	UP-DOWN	Eng mfr supply	68403P
Trim, Honda	2"	UP-DOWN	Eng mfr supply	68404P
Trim, mariner/merc, Yamaha 2001	2"	UP-DOWN	Eng mfr supply	68405P
Trim, Yamaha Outboards, pre 2001	2"	UP-DOWN	Eng mfr supply	68406P
12v Voltmeter, 8-18 Volts	2"	8-18 VDC	N/R	68408P
12 Battery Condition Indicator	2"		N/R	68409P
System Check - Evinrude/Johnson	2"		Eng mfr supply	68410P
System Check - Suzuki	2"			68411P
Instrument Set "OUTBOARD"	4 Gauge set			68412P
Instrument Set "INBOARD/STERNDRIVE"	6 Gauge set			68413P

ECLIPSE INSTRUMENTS

OPTIONAL ACCESSORIES	PART NO.
2" Aircraft Style Bezel	IA65476
3" Aircraft Style Bezel	IA65477
12-Volt Light & Socket (wedge base)	IA62995
Panel mount AGC-type Fuse Holder	IA17537
Tubing for Pitot Tube, 100-foot Coil	56353P
Tach Harness, pre-1996 OmC (3-wire)	IH14767
Tach Harness, merc/mariner (5-wire)	IH15105
Pack O' Pitots (12 Pitot tubes in Shipper/P.O.P. Display)	59677P
Veethree Electrical Gauge Tester (Works on all Veethree electrical instruments, instructions provided)	55920



ISSUE DATE AUGUST-09
DATA SHEET NO USA-G3

AT A GLANCE

FEATURES

- Large, easy to read graphics
- Classic white graphics and pointer on deep black faces.
- Low-profile brushed stainless steel bezels.
- Perimeter lighting and scratch resistant glass lenses.
- Tachometers for diesels available.
- Programmable tach/hourmeter offered for diesels
- Mechanical oil pressure gauge available.
- Ideal replacement for Stewart-Warner® "Deluxe" instruments.

PAGE 1 OF 2



THE HEAVY DUTY RANGE OF INSTRUMENTS

TECHNICAL DATA

A classic line for inboards including diesels, Heavy Duty includes mechanical oil pressure gauges, ammeter, engine sync gauges and a range of diesel tachometers, including a programmable tach/hourmeter.



STEP-PROFILE BEZEL

For Sender information refer to the Veethree Sender Code data sheet or visit the Veethree website at www.v3instruments.com

Actual hole sizes: Nominal 2"=2.13/2.16" except Hourmeter =2.00/2.06". Nominal 3"=3.41/3.44".

Request Dimension data sheet for complete dimension data.

HEAVY DUTY RANGE OF INSTRUMENTS

ORDER INFORMATION	SIZE	RESISTANCE RANGE	SENDER CODE	PART NO.
Ammeter-Direct reading	2"	60-0-60A	N/R	80710P
Engine Synchronizer gauge:	2"	Port-Starboard	Requires I	80730P
Fuel gauge:	2"	240-33 Ohms	Requires F	80150P
Hourmeter:	2"	10,000 Hrs.	N/R	82760P
Oil Pressure Gauges (Electric): Oil Pressure 80 PSI Oil Pressure 100 PSI	2" 2"	0-80 PSI 0-100 PSI	Requires C Requires C	80180P 80181P
Oil Pressure Gauge (Mechanical, 1/8" NPT Connection): Oil Pressure 100 PSI****	2"	0-100 PSI	****	82380P
Oil Temperature Gauge (Electric): Oil Temperature 320°F	2"	140-320° F	Requires E	80596P
Speedometer Kit: 60 MPH (Pitot Type)	3"	10-60 MPH	Includes G	80514P
Tachometers (Electric): Diesel Alternator** Diesel Magnetic Pickup, 90-180 Teeth O/B & 4-Stroke Gas Engines* Signaflex Pulse Generator	3" 3" 3" 3"	0-3500 RPM 0-3500 RPM 0-6000 RPM 0-3500 RPM	See T Requires B O/B ALT./Coil Requires A	82301P 82303P 82288P 82301P
Tachometer/Hourmeter (Electric, Programmable): Diesel alternator and Signaflex	3"	0-3500 RPM	Requires A, B or T	82430P
Water Temp. Gauge (Electric): Water Temp 240°F	2"	120-240°F	Requires D	
Voltmeters-12 & 24 Volt: 12 Volt System 24 Volt System	2" 2"	10-16 VDC 20-32 VDC	N/R N/R	80134P 80131P

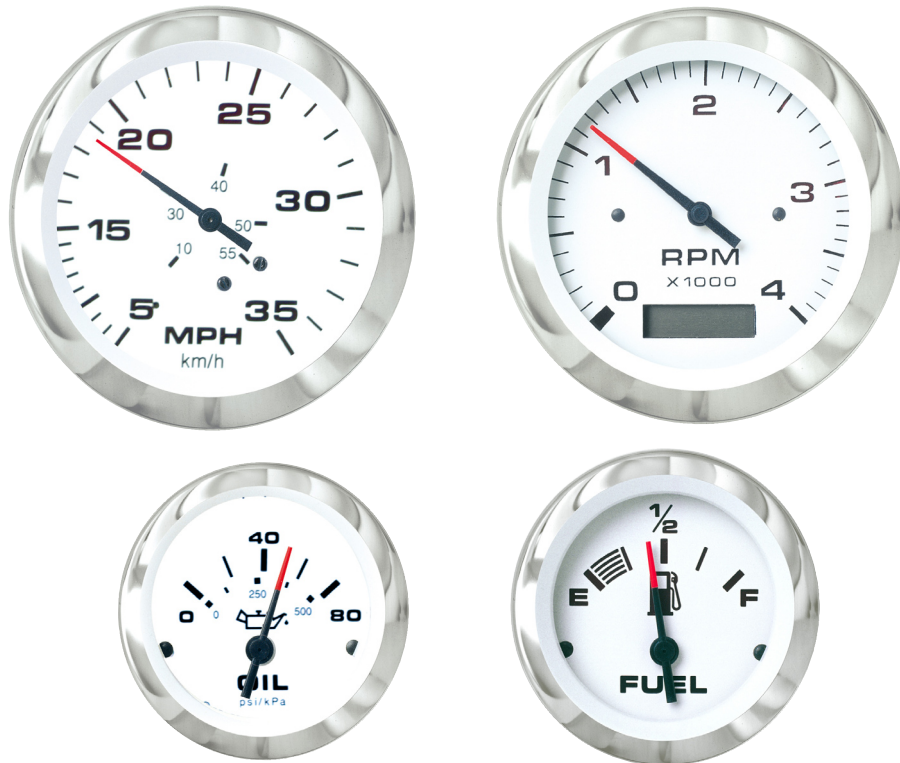
OPTIONAL ACCESSORIES	PART NO.
Wedge Base Light, for Tachometers	IA62995
Push-in Light for 2" Instruments	1827871P
Tubing for Pitot Tube, 100-foot Coil	56353P
Tach Harness, pre-1996 OMC (3-wire)	IH14767
Tach Harness, Merc/Mariner (5-wire)	IH15105
Pack O' Pitots (12 Pitot Tubes in Shipper/P.O.P. Display)	59677P
Veethree electrical gauge Tester (Works on Veethree electrical instruments. Instructions provided.)	55920

* Mariner 30 & 40 HP (2-cylinder) engines require a module (Mercury P/N 17461A2) when using outboard tachometers. Not tested for non-original-equipment (aftermarket) ignition systems. Not for diesels.

** May require alternator tap if terminal for tachometer is not available.

*** Signaflex senders and drive tips are for domestic diesel engines only (not for Lehman, Renault, Volvo, Yanmar, etc.)

**** Use suitable hose or tubing. NOT AVAILABLE FROM VEETHREE



THE LIDO RANGE OF INSTRUMENTS (OEM VERSION)

TECHNICAL DATA

Stylish stainless steel bezel design, black on white graphics, accurate and reliable, these tough instruments look good on all types of boats. Domed glass sheds water and resists scratching.

A comprehensive family of instruments for outboards, stern drives and inboards, including diesels! Lido instruments feature crisp white dials and fire-orange pointer tips. Red through-dial and white perimeter lighting is provided for great night readability. Lido offers wide inboard coverage with engine sync gauges as well as diesel alternator and magnetic pickup tachometers. A hot seller with OEMs and covers most inboards!



For Sender information refer to the Veethree Sender Code data sheet or visit the Veethree website at www.v3instruments.com
 Actual hole sizes: Nominal 2"=2.13/2.16" except Hourmeter =2.00/2.06". Nominal 3"=3.41/3.44".
 Request Dimension data sheet for complete dimension data.

NOTE: These gauges are also available with a Fog Resistant Lens.

ISSUE DATE AUG-09
 DATA SHEET NO
 USA-OEM-G4

AT A GLANCE

FEATURES

- Instruments available for most outboards, stern drives and gasoline-powered inboards
- Scratch-resistant domed glass lenses
- Enhanced illumination: through-dial and perimeter lighting for excellent readability at night.
- Low-range speedometers
- U.S. and metric scales, with ISO symbols, where appropriate
- Optional add-on square bezels for modular appearance
- Complies with SAE j-1810

PAGE 1 OF 3

THE LIDO RANGE OF INSTRUMENTS

ORDER INFORMATION	SIZE	DIAL RANGE	CONNEC- TOR TYPE	SS DOMED BZL STANDARD LENS	SS DOMED BZL FOG RESISTANT LENS
Blank Gauge	2"	N/A	N/A	59414	-
Digital Depth (display head only)	2"	2.5 - 200 Ft. Transducer	Custom	67399 67309	67399 67309
Engine Monitor	2"	Suzuki Evinrude / Sys Chk	Sumitomo Deutsch	65669SS 65206SS	65669SSF 65206SSF
Engine Synch Gauge (display head only)	2"	Port - Stbd	Stud	62788	62788F
Fuel Level	2" 2" 2"	E - F E - F E - F	Stud Deutsch Metri-Pack	59655 780024PDB 780024PMNB	59655F 780024PDFB 780024PMNB
Hourmeter	2"	10,000 Hrs	1/4' Spade	59416	59416F
Oil Pressure	2" 2" 2" 2" 2" 2"	0-80 PSI 0-80 PSI 0-80 PSI 0-100 PSI 0-100 PSI 0-100 PSI	Stud Deutsch Metri-Pack Stud Deutsch Metri-Pack	59653 780025PDB 780025PMNB 62750 780026PDB 780026PMNB	59653F 780025PDFB 62750F
Speedometer (display head only)	3" 3" 3" 3" 3"	35 MPH 50 MPH 65 MPH 80 MPH 100 MPH	See "G" See "G" See "G" See "G" See "G"	61751 61752 59713 59649 64844	61751F 61752F 59713F 59649F 64844F
Tachometer - Outboards and 4 cycle gas I/O & Inboards	3" 3" 3"	0-7000 RPM 0-7000 RPM 0-7000 RPM	Stud Deutsch Metri-Pack	59737 780028PDB 780028PMNB	59737F 780028PDFB 780028PMNB
Tachometer - Mag pick up	3" 3" 3"	0-4000 RPM 0-4000 RPM 0-4000 RPM	Stud Deutsch Metri-Pack	- - -	66093F 780422PDFB 780422PMFB
Tach / Hourmeter - Outboards and 4 cycle gas I/O & Inboards	3" 3" 3"	0-7000 RPM 0-7000 RPM 0-7000 RPM	Stud Deutsch Metri-Pack	65129 780421PDB 780421PMNB	65129F 780030PDFB 780030PMFB
Tach / Hourmeter - Diesel Alternator	3" 3" 3"	0-4000 RPM 0-4000 RPM 0-4000 RPM	Stud Deutsch Metri-Pack	- - -	63524F 780423PDFB 780423PMFB
Tach / Hourmeter - Mag. pick up	3" 3" 3"	0-4000 RPM 0-4000 RPM 0-4000 RPM	Stud Deutsch Metri-Pack	62749 780029PDB 780029PMNB	62749F 780029PDFB 780029PMFB
Tachometer with BRP systems check	3"	0-7000 RPM	Stud	-	64477F
Tachometer with Suzuki Warning Light	3"	0-7000 RPM	Stud	67030	67030F
Trim - Evinrude / Johnson / Suzuki 4 stroke '02 & on	2" 2" 2"	UP - DN UP - DN UP - DN	Stud Deutsch Metri-Pack	61753 780033PDB 780033PMNB	61753F 780033PDFB 780033PMFB
Trim - Honda	2"	UP - DN	Stud	63526	63526F
Trim - Mariner / Mercury / Volvo DP & SX, Yamaha '01 & on	2" 2" 2"	UP - DN UP - DN UP - DN	Stud Deutsch Metri-Pack	59656 780027PDB 780027PMNB	59656F 780027PDFB 780027PMFB
Voltmeter	2" 2" 2"	8 - 18 V 8 - 18 V 8 - 18 V	Stud Deutsch Metri-Pack	59656 780027PDB 780027PMNB	59656F 780027PDFB 780027PMFB
Water Pressure (display head only)	2" 2"	30 PSI 40 PSI	N/A N/A	63523 67380	63523F 67380F
Water Temperature - I/O and Inboards	2"	120-240F	Stud	59654	59654F

OPTIONAL ACCESSORIES	PART NO.
Pitot tube - Bulk Packaged	50441
Pitot tube Including mounting hardware - single packaged	57576
Pitot tube kit including hose and mounting hardware up to 65 MPH - single packaged	1655071
Pitot tube kit including hose and mounting hardware up to 80 MPH - single packaged	1809271
Fuel level sender - universal up to 24" tank depth - bulk packages	87424KM
Outboard water pressure installation kit including hose and connectors - single packaged	62023



**PREMIER AND
PREMIER PRO (FOG RESISTANT)*
RANGE OF INSTRUMENTS
(OEM VERSION)**

TECHNICAL DATA

White and Blue graphics on a black background makes Premier style gauges a smart choice for all modern and traditional boats. Automotive style lighting provides outstanding readability at night eliminating the "halo" around the dial edge. Backlighting is red, with a lit white pointer. Bezel choices include the low profile black bezel and Elite Stainless bezel. *(meets or exceeds SAE j-1810)



Elite Bezel Profile



Low Bezel Profile

For Sender information refer to the Veethree Sender Code data sheet or visit the Veethree website at www.v3instruments.com

Actual hole sizes: Nominal 2"= 2.13"/2.16" except
Hourmeter =2.00/2.06". Nominal 3"=3.41/3.44".
Nominal 5"=4.375 diameter.

Request Dimension data sheet for complete dimension data.

ISSUE DATE AUG-09

DATA SHEET NO

USA-OEM-G5

AT A GLANCE

FEATURES

PREMIER:

- Instruments available for most outboards, sterdrives and gasoline powered inboards

- Superior illumination: automotive type light piping for outstanding readability at night and no "halo" around edge of dial

- Scratch-resistant domed glass lens

- US and Metric scales with ISO symbols, where appropriate

PREMIER PRO:

- Same features as Premier, but with Fog resistant design for maximum visibility in all conditions

- Complies with SAE j-1810

PAGE 1 OF 3

PREMIER (FOG RESISTANT)

ORDER INFORMATION	SIZE	DIAL RANGE	CONNECTOR TYPE	BLACK BEZEL STANDARD LENS	BLACK BEZEL FOG RESISTANT LENS	SS ELITE STANDARD LENS	SS ELITE BZL FOG RESISTANT LENS	GOLD DOMED BZL STANDARD LENS	GOLD ELITE BZL STANDARD LENS
Blank Gauge	2"	N/A	N/A	57406	-	65628SE	65627SEF	62794	63759
Digital Depth (display head only)	2"	2.5-200 Ft Transducer	Custom	-	-	67402 67309	67402 67309	-	-
Engine Monitors	2" 2"	Suzuki Evinrude/Sys Chk	Sumitomo Deutsch	65668BMD 65205	65668BMD 65205F	65668SE	65668SEF	-	65668GR 63739
Engine Synch, Gauge Only	2" 3"	Port - Stbd Port - Stbd	Stud Stud	85730 84733	84730F 84733F	65630SE 65631SE	65630SEF 65631SEF	62844 62420	- 63285
Fuel Level	2" 2" 2"	E-F E-F E-F	Stud Deutsch Metri-Pack	84150 780481PDNB 780481PMNB	84150F 780481PDFB 780481PMFB	65632SE 780055PDNB 780055PMNB	65632SEF 780055PDFB 780055PMFB	62408 780609PDNB 780609PMNB	63283 780427PDNB 780427PMNB
Hourmeter	2"	10,000 hrs	N/R	84760	84760F	65633SE	65633SEF	62766	63668
Oil Pressure	2" 2" 2" 2" 2" 2"	0-80 PSI 0-80 PSI 0-80 PSI 0-100 PSI 0-100 PSI 0-100 PSI	Stud Deutsch Metri-Pack Stud Deutsch Metri-Pack	84180 780482PDNB 780482PMNB 84181 780483PDNB 780483PMNB	84180F 780482PDFB 780482PMFB 84181F 780483PDFB 780483PMFB	65637SE 780056PDNB 780056PMNB 65636SE 780057PDNB 780057PMNB	65637SEF 780056PDFB 780056PMFB 65636SEF 780057PDFB 780057PMFB	62409 780610PDNB 780610PMNB 62858 780611PDNB 780611PMNB	- - - - - -
Speedometer (display head only) for pitot tube	3" 3" 3" 3"	35 MPH 50 MPH 65 MPH 80 MPH	N/A N/A N/A N/A	84521 84510 84513 84511	84521F 84510F 84513F 84511F	- 65639SE 65641SE 65641SE	- 65639SEF 65641SEF 65643SEF	62765 62405 62406 62863	63667 - 63276 -
Rudder Angle Indicator	2"	Port - Stud	Stud	84770	84770F	65638SE	65638SEF	-	-
Tachometer - Outboards and 4 cycle gas I/O & inboard	3" 3" 3" 5" 5" 5" 3" 3" 3" 5" 5"	0-6000 RPM 0-6000 RPM 0-6000 RPM 0-7000 RPM 0-7000 RPM 0-7000 RPM 0-8000 RPM 0-8000 RPM 0-8000 RPM 0-8000 RPM 0-8000 RPM	Stud Deutsch Metri-Pack Stud Deutsch Metri-Pack Stud Deutsch Metri-Pack Stud Deutsch Metri-Pack	84288 780487PDNB 780487PMNB - - - 84320 780488PDNB 780488PMNB 84332 780489PDNB 780489PMNB	84288F 780487PDFB 780487PMFB - - - 84320F 780488PDFB 780488PMFB 84332F 780489PDFB 780489PMFB	65650SE 780061PDNB 780061PMNB 65651SE 780476PDNB 780476PMNB 65652SE 780062PDNB 780062PMNB 65653SE 780477PDNB 780477PMNB	65650SEF 780061PDFB 780061PMFB 65651SEF 780476PDFB 780476PMFB 65652SEF 780062PDFB 780062PMFB 65653SEF 780477PDFB 780477PMFB	62404 780615PDNB 780615PMNB - - - 62444 780616PDNB 780616PMNB - - - - - -	63277 780428PDNB 780428PMNB - - - 63669 780429PDNB 780429PMNB - - - - - -
Tachometer - Diesel Alternator	3" 3" 3" 5" 5" 5"	0-4000 RPM 0-4000 RPM 0-4000 RPM 0-4000 RPM 0-4000 RPM 0-4000 RPM	Stud Deutsch Metri-Pack Stud Deutsch Metri-Pack	84279 780484PDNB 780484PMNB - - -	84279F 780484PDFB 780484PMFB - - -	65646SE 780058PDNB 780058PMNB 65647SE 780474PDNB 780474PMNB	65646SEF 780058PDFB 780058PMFB 65647SEF 780474PDFB 780474PMFB	62864 780612PDNB 780612PMNB - - -	- - - - - -
Tachometer - Mag Pick Up	3" 3" 3" 5" 5" 5"	0-4000 RPM 0-4000 RPM 0-4000 RPM 0-4000 RPM 0-4000 RPM 0-4000 RPM	Stud Deutsch Metri-Pack Stud Deutsch Metri-Pack	84283 780485PDNB 780485PMNB - - -	84283F 780485PDFB 780485PMFB - - -	65648SE 780059PDNB 780059PMNB 65649SE 780475PDNB 780475PMNB	65648SEF 780059PDFB 780059PMFB 65649SEF 780475PDFB 780475PMFB	62865 780613PDNB 780613PMNB - - -	- - - - - -
Tachometer - Signalflex	3" 3" 3"	0-4000 RPM 0-4000 RPM 0-4000 RPM	Stud Deutsch Metri-Pack	84281 780486PDNB 780486PMNB	84281F 780486PDFB 780486PMFB	- - -	- - -	62866 780614PDNB 780614PMNB	- - -
Tach / Hourmeter - Outboards and 4 cycle gas I/O & inboards	3" 3" 3" 5" 5" 5"	0-6000 RPM 0-6000 RPM 0-6000 RPM 0-6000 RPM 0-6000 RPM 0-6000 RPM	Stud Deutsch Metri-Pack Stud Deutsch Metri-Pack	84310 780494PDNB 780494PMNB - - -	84310F 780494PDFB 780494PMFB - - -	65660SE 780066PDNB 780066PMNB 65661SE 780480PDNB 780480PMNB	65660SEF 780066PDFB 780066PMFB 65661SEF 780480PDFB 780480PMFB	62403 780620PDNB 780620PMNB - - -	63278 780430PDNB 780430PMNB - - -

ORDER INFORMATION	SIZE	DIAL RANGE	CONNECTOR TYPE	BLACK BEZEL STANDARD LENS	BLACK BEZEL FOG RESISTANT LENS	SS ELITE BZL STANDARD LENS	SS ELITE BZL FOG RESISTANT LENS	GOLD DOMED BZL STANDARD LENS	GOLD ELITE BZL STANDARD LENS	
Tach/Hourmeter - Diesel Alternator	3"	0-4000 RPM	Stud	84324	84324F	65655SE	65655SEF	62868	-	
	3"	0-4000 RPM	Deutsch	780490PDNB	780490PDFB	780063PDNB	780063PDFB	780617PDNB	-	
	3"	0-4000 RPM	Metri-Pack	780490PMNB	780490PMFB	780063PMNB	780063PMFB	780617PMNB	-	
	5"	0-4000 RPM	Stud	-	-	65656SE	65656SEF	-	-	
	5"	0-4000 RPM	Deutsch	-	-	780478PDNB	780478PDFB	-	-	
5"	0-4000 RPM	Metri-Pack	-	-	780478PMFB	780478PMFB	-	-		
Tach/Hourmeter - Mag pick up	3"	0-4000 RPM	Stud	84323	84323F	65657SE	65657SEF	62869	-	
	3"	0-4000 RPM	Deutsch	780491PDNB	780491PDFB	780064PDNB	780064PDFB	780618PDNB	-	
	3"	0-4000 RPM	Metri-Pack	780491PMNB	780491PMFB	780064PMNB	780064PMFB	780618PMNB	-	
	5"	0-4000 RPM	Stud	-	-	65658SE	65658SEF	-	-	
	5"	0-4000 RPM	Deutsch	-	-	780479PDNB	780479PDFB	-	-	
	5"	0-4000 RPM	Metri-Pack	-	-	780479PMNB	780479PMFB	-	-	
	3"	0-6000 RPM	Stud	84333	84333F	-	-	-	-	
	3"	0-6000 RPM	Deutsch	780492PDNB	780492PDFB	-	-	-	-	
3"	0-6000 RPM	Metri-Pack	780492PMNB	780493PMFB	-	-	-	-		
Tach/Hour - Signaflex	3"	0-4000 RPM	Stud	84325	84325F	65659SE	65659SEF	62870	-	
	3"	0-4000 RPM	Deutsch	780493PDNB	780493PDFB	780065PDNB	780065PDFB	780619PDNB	-	
	3"	0-4000 RPM	Metri-Pack	780493PMNB	780493PMFB	780065PMNB	780065PMFB	780619PMNB	-	
Tachometer with BRP System Check	3"	0-8000 RPM	Deutsch	58883	58888F	65296	65654SEF	62796	63670	
Tachometer with Suzuki Warning Light	3"	0-7000 RPM	Sumitomo	67032	67032F	-	-	-	-	
Trim - Evinrude/Johnson/Suzuki 4 Stroke '02 & on	2"	UP-DN	Stud	84740	84740F	65662SE	65662SEF	62795	-	
	2"	UP-DN	Deutsch	780495PDNB	780495PDFB	780068PDNB	780068PDFB	780621PDNB	-	
	2"	UP-DN	Metri-Pack	780495PMNB	780495PMFB	780068PMNB	780068PMFB	780621PMNB	-	
Trim - Honda	2"	UP-DN	Stud	84746	84746F	65663SE	65663SEF	67143	-	
	Trim - Mariner/Mercury/Volvo DP & SX, Yamaha 2001 & on	2"	UP-DN	Stud	84742	84740F	65662SE	65662SEF	62411	63281
		2"	UP-DN	Deutsch	780496PDNB	780495PDFB	780068PDNB	780068PDFB	780622PDNB	780431PMNB
2"		UP-DN	Metri-Pack	780496PMNB	780495PMFB	780068PMNB	780068PMNB	780622PMNB	780431PMNB	
Voltmeter	2"	10-16 V	Stud	84134	84134F	65665SE	65665SEF	62407	63282	
	2"	10-16 V	Deutsch	780497PDNB	780497PDFB	780071PDNB	780071PDFB	780623PDNB	780432PDNB	
	2"	10-16 V	Metri-Pack	780497PMNB	780497PMFB	780071PMNB	780071PMFB	780623PMNB	780432PMNB	
	2"	20-32 V	Stud	84131	84131F	-	-	62875	-	
	2"	20-32 V	Deutsch	780498PDNB	780498PDFB	-	-	780624PDNB	-	
	2"	20-32 V	Metri-Pack	780498PMNB	780498PMFB	-	-	780624PMNB	-	
Water Pressure (display head only)	2"	15 PSI	N/A	-	-	-	-	-	-	
	2"	30 PSI	N/A	84370	84370F	65634SE	65634SEF	62847	65709	
	2"	40 PSI	N/A	67386	61843F	-	-	67373	67372	
Water Temperature - I/O and inboards	2"	120F - 240F	Stud	84590	84590F	65666SE	65666SEF	62410	63279	
	2"	120F - 240F	Deutsch	780499PDNB	780499PDFB	780067PDNB	780067PDFB	780625PDNB	780433PDNB	
	2"	120F - 240F	Metri-Pack	780499PMNB	780499PMFB	780067PMNB	780067PMFB	780625PMNB	780433PMNB	
Water Temperature - outboards	2"	100F - 220F	Stud	84610	84610F	-	-	-	-	
	2"	100F - 220F	Deutsch	780500PDNB	780500PDFB	-	-	-	-	
	2"	100F - 220F	Metri-Pack	780500PMNB	780500PMFB	-	-	-	-	

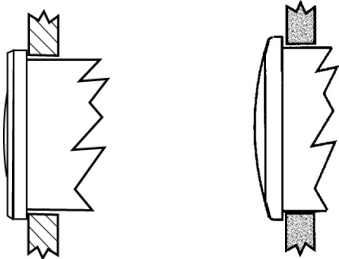


STERLING RANGE OF INSTRUMENTS (OEM VERSION)

TECHNICAL DATA

With black graphics on a brushed aluminum dial, Sterling gauges add a unique, polished look to any dash. Sterling utilizes perimeter light to illuminate the dial and black pointers. Both low profile and Elite style bezels are available, as well as anti-fog coated lenses*

*(meets or exceeds SAE j-1810)



For sender information refer to Veethree sender code data sheet or visit the Veethree website at

www.v3instruments.com

Actual hole sizes: Nominal 2" = 2.13" / 2.16" except

Hourmeter = 2.00 / 2.06. Nominal 3" = 3.41" / 3.44"

Request dimension data sheet for complete dimension data

ISSUE DATE AUG-09

DATA SHEET NO

USA-OEM-G9

AT A GLANCE

FEATURES

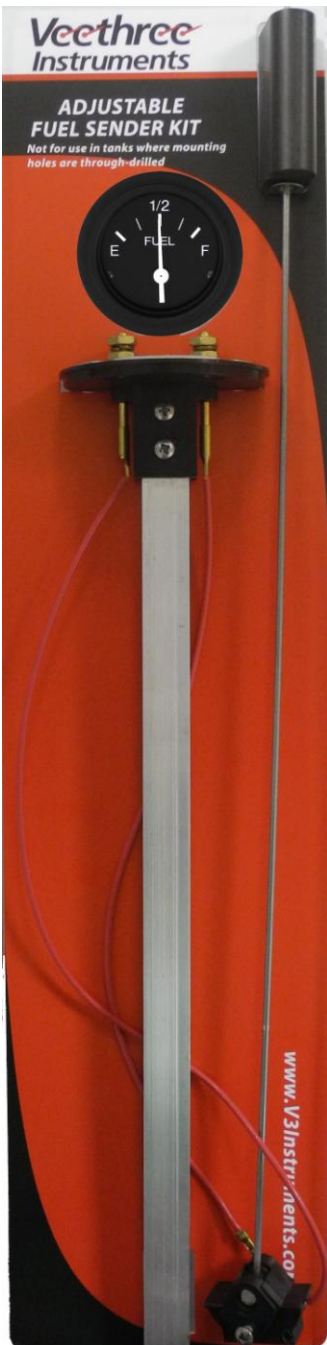
- Instruments available for most outboards, sterndrives and gasoline powered inboards
- Perimeter style lighting
- Scratch-resistant domed glass lenses
- U.S. and Metric scales, with ISO symbols, where appropriate
- Tach/Hour gauges feature LCD hourmeter
- Complies with SAE j-1810

PAGE 1 OF 2

STERLING RANGE OF INSTRUMENTS

ORDER INFORMATION	SIZE	DIAL RANGE	CONNECTOR TYPE	SS DOMED STANDARD LENS	SS DOMED ANTI-FOG LENS	SS ELITE BZL STANDARD LENS
Digital Depth Gauge (for transducer - order part #67309)	2"	N/A	N/A	67407	67407	67408
Fuel Level Gauge	2"		Stud	63477	62354	63580
Fuel Level Gauge	2"		Deutsch	-	780039PDFB	780406PDNB
Fuel Level Gauge	2"		Merti-Pak	-	780039PMFB	-
Monitor Gauge for Suzuki engines	2"		Sumitomo	65698SS	65698SSF	65698SE
Oil Pressure	2"	0 -80 PSI	Stud	63479	62352	63734
	2"	0 -80 PSI	Deutsch	-	780040PDFB	780407PDNB
	2"	0 -80 PSI	Merti-Pak	-	780040PMFB	-
Speedometer (display head only)	3"	65 MPH	N/A	63475	62349	67338
	3"	80 MPH	N/A	63476	63485	67339
System Check, BRP Engines	2"		Deutsch	64476	-	63585
Tachometer - Outboards and 4 cycle gas	3"	7000 RPM	Stud	63473	62355	67340
	3"	7000 RPM	Deutsch	-	780041PDFB	780863PDNB
	3"	7000 RPM	Merti-Pak	-	780041PMFB	-
Tach / Hourmeter - Outboards and 4 cycle gas	3"	7000 RPM	Stud	63474	62348	67341
	3"	7000 RPM	Deutsch	-	780042PDFB	780864PDNB
	3"	7000 RPM	Merti-Pak	-	780042PMFB	-
	5"	7000 RPM	Stud	-	-	63579
Trim - Evinrude / Johnson / Suzuki 4 stroke '02 & on	2"	UP - DN	Stud	63483	63487	63582
	2"		Deutsch	-	780405PDFB	780409PDNB
Trim - Honda	2"	UP - DN	Stud	64475	67342	63735
Trim - Mariner / Mercury / Volvo / Yamaha '01 & on		UP - DN	Stud	63482	62350	63583
			Deutsch	-	780044PDFB	780410PDNB
			Merti-Pak	-	780044PMFB	-
Voltmeter	2"	8-18 Volt	Stud	63478	62351	63581
		8-18 Volt	Deutsch	-	780045PDFB	780411PDNB
		8-18 Volt	Merti-Pak	-	780045PMFB	-
Water Pressure Outboard (display head only)		30 PSI	N/A	63481	63486	67337
		40 PSI	N/A	67375	67375F	67375SE
Water Temperature - Electric	2"	120F - 240F	Stud	63480	62353	63733
		120F - 240F	Deutsch	-	780043PDFB	780412PDNB
		120F - 240F	Merti-Pak	-	780043PMFB	-

UNIVERSAL FUEL GAUGE & SENDING UNIT KIT



Veethree Fuel Gauge & Sender Kit includes a reliable dash-mount gauge with a black face and white numerals. The triple patented sending unit has an adjustable float arm and U-channel that fits virtually all tanks from 4" to 24" deep. Compatible with 12V DC systems with common or insulated ground.

HIGHLIGHTS & FEATURES

- Adjustable for tank depths from 4" to 24".
- Left or right arm adjustable in 90° increments.
- Standard SAE 5-hole pattern
- Rust proof derlin flange with rigid aluminum insert.
- 10-24 stud connections for maximum integrity.
- Stainless steel, aluminum and brass construction.
- Compatible with isolated and conventional ground systems
- 240 (empty) to 33 (full) OHM resistance range.

Kit Includes



Fuel Gauge



Sending Unit



Gasket & Screws

Veethree Instruments

⚠ Read and follow these instructions carefully before proceeding with installation. Do not deviate from wiring instructions. Incorrect wiring could cause an electrical short with possible fire. Make sure that wires are disconnected away from moving or hot engine components. If wires run through drilled holes, protect the wires using grommets and de-burring the holes. Always disconnect the battery before making any electrical connections. Before reconnecting battery be sure all connections are properly made and soldered.

Instructions for installation of a fuel level transmitter unit to permanently installed fuel tanks manufactured with an SAE standard 5-hole transmitter flange pattern opening. These transmitters are not recommended for use in portable tanks, or tanks manufactured without this opening. Tanks with through-drilled mounting screw holes require a fuel resistant sealant applied to the screw threads to prevent fuel "wicking" past the mounting screw threads.

When working around the fuel tank, there should be no smoking, no open fires or hot lights, and no power tools that could cause a spark.

Installation Instructions

Part Number 56948E

For more information and to order contact Lilly@epmarine.com