

A photograph of two white motorboats on clear, turquoise water. The larger boat on the left has a cabin and a radar dome, with the number 'A1573' visible on its side. The smaller boat on the right is a speedboat with a white canopy. The water is crystal clear, showing the sandy bottom and some coral reefs. The sky is a deep blue.

HiTide Mfg Group LLC

2020 Catalog

Plotting a course to success by providing quality craftsmanship and premier customer service.

www.GoToHMG.com



Quality Products & Reliable Customer Service

Our name says we are a manufacturing company. Our product line shows we are a design, engineering, and manufacturing firm. And our success proves that, at the end of the day, we are really in the customer service business.

HiTide Manufacturing Group meets the needs of the marine market by focusing on continuous improvement processes based on our close relationships with our customers and core partners. By fully understanding your needs and desires, we constantly provide the products and services that meet your requirements.

www.GoToHMG.com



HMG Brands

- *Innovative Product Solutions*
- *Jim Black & Associates*
- *Hurricane Towers & Tops*



www.GoToHMG.com



Innovative Doors

Features

- Hidden fastener
- Door opens past 180 degrees
- Larger inside dimensions
- Easy cut out with 3/8" clearance from start of flange to beginning of screw hole
- 316 stainless steel hinge
- OEM can screw through the hinge into the deck for added strength and durability
- In-laid gasket to ensure a good seal every time
- Saralon resin for a lifetime
- Saralon 2 resin Handles with a positive stop and click secured by a 316 SS pin
- Design naturally sheds water
- CE Certified - www.imci.org



www.GoToHMG.com



Description OEM Part #/Color	O.D. Standard O.D. Metric	I.D. Standard I.D. Metric	Cut-out Standard Cut-out Metric
8"x14" Innovative Door Part # 520-035 Polar White Part # 520-033 Arctic White Part # 520-039 Black	8" x 14.50" 204mm x 369mm	5.40" x 11.90" 138mm x 303mm	6.30" x 12.80" 160mm x 326mm
9"x19" Innovative Door Part # 520-065 Polar White Part # 520-063 Arctic White	9" x 19" 229mm x 483mm	6.50" x 16.50" 166mm x 420mm	7.25" x 17.25" 185mm x 439mm
11"x15" Innovative Door Part # 520-105 Polar White Part # 520-103 Arctic White Part # 520-109 Black	11" x 15" 280mm x 381mm	8.50" x 12.50" 216mm x 318mm	9.25" x 13.25" 235mm x 337mm
11"x19" Innovative Door Part # 520-135 Polar White Part # 520-133 Arctic White	11" x 19" 280mm x 483mm	8.50" x 16.50" 216mm x 420mm	9.25" x 17.25" 235mm x 439mm
13"x17" Innovative Door Part # 520-205 Polar White Part # 520-203 Arctic White Part # 520-209 Black	13" x 17" 331mm x 432mm	10.50" x 14.50" 267mm x 369mm	11.25" x 15.25" 286mm x 540mm
13"x23" Innovative Door Part # 520-305 Polar White Part # 520-303 Arctic White Part # 520-309 Black	13" x 23" 331mm x 585mm	10.50" x 20.50" 267mm x 521mm	11.25" x 21.25" 286mm x 540mm
13"x30" Innovative Door Part # 520-505 Polar White Part # 520-503 Arctic White	13" x 30" 331mm x 762mm	10.50" x 27.50" 267mm x 699mm	11.25" x 28.25" 286mm x 718mm
16"x18" Innovative Door Part # 520-725 Polar White Part # 520-723 Arctic White	16" x 18" 407mm x 458mm	13.50" x 15.50" 343mm x 394mm	14.25" x 16.25" 362mm x 413mm
16"x18" Innovative Pontoon Door Part # 550-705 Polar White Part # 550-703 Arctic White Part # 550-709 Black	16" x 18" 407mm x 458mm	13.50" x 15.50" 343mm x 394mm	14.25" x 16.25" 362mm x 413mm

Part #'s in Black print are standard pack and standard lead-time.

Part #'s in Green print require minimum orders and standard lead-time plus 1-2 weeks.

Part #'s in Red print require minimum orders and extended lead times. Please call for information.



Innovative Tackle & Storage

Features

- Hidden fastener
- Tackle centers provide Plano inserts
- Door opens past 180 degrees
- Larger inside dimensions
- Easy cut out with 3/8" clearance from start of flange to beginning of screw hole
- 316 stainless steel hinge
- OEM can screw through the hinge into the deck for added strength and durability
- In-laid gasket to ensure a good seal every time
- Saralon resin for a lifetime
- Saralon 2 resin Handles with a positive stop and click secured by a 316 SS pin
- Design naturally sheds water



www.GoToHMG.com



Description OEM Part #/Color	O.D. Standard O.D. Metric	I.D. Standard I.D. Metric	Cut-out Standard Cut-out Metric
8" x 14" Tackle Center <i>Part # 530-035 Polar White</i> <i>Part # 530-033 Arctic White</i> <i>Part # 530-039 Black</i>	8" x 14.50" x 10" 204mm x 369mm x 254mm	5.40" x 11.90" 138mm x 303mm	6.30" x 12.80" 160mm x 326mm
11" x 15" Tackle Center <i>Part # 530-105 Polar White</i> <i>Part # 530-103 Arctic White</i> <i>Part # 530-109 Black</i>	11" x 15" x 10" 280mm x 483mm x 254mm	8.50" x 12.50" 216mm x 318mm	9.25" x 13.25" 235mm x 337mm
13" x 17" Tackle Center <i>Part # 530-205 Polar White</i> <i>Part # 530-203 Arctic White</i> <i>Part # 530-209 Black</i>	13" x 17" x 12" 331mm x 432mm x 305mm	10.50" x 14.50" 267mm x 369mm	11.25" x 15.25" 286mm x 540mm
8"x 14" Glove Box <i>Part # 529-035 Polar White</i> <i>Part # 529-033 Arctic White</i>	8" x 14.50" x 7" 204mm x 369mm x 178mm	5.40" x 11.90" 138mm x 303mm	6.30" x 12.80" 160mm x 326mm
8"x 14" Utility Box <i>Part # 529-045 Polar White</i> <i>Part # 529-043 Arctic White</i>	8" x 14.50" x 2.25" 204mm x 369mm x 64mm	5.40" x 11.90" 138mm x 303mm	6.30" x 12.80" 160mm x 326mm
Drop in Tub for 11"x15" Door <i>Part # 560-796 White</i> Drop in Tub for 13"x17" Door <i>Part # 560-799 White</i>	9" (229mm) deep 11" (280mm) deep		
8" Utility Tube <i>Part # 512-805-LYD Polar White</i> <i>Part # 512-803-LYD Arctic White</i> <i>Without Lanyard</i> <i>Part # 512-805 Polar White</i> <i>Part # 512-803 Arctic White</i>	6" x 8" deep 152mm x 203 deep	3.75" x 8" deep 95mm x 203mm deep	4.20" 107mm
15' Wash Down Hose Unit <i>Part # 512-1305-OR-500-BR Polar White</i> <i>Part # 512-1303-OR-500-BR Arctic White</i> <i>Part # 512-1305-BE-500-BR Polar White</i> <i>Part # 512-1303-BE-500-BR Arctic White</i>	6" x 12" deep 152mm x 305mm deep	3.75" x 12" deep 95mm x 305mm	4.20" 107mm
8" x 12" Helm Box Organizer <i>Part # 528-xxxx-812-05 Polar White</i> <i>Part # 528-xxxx-812-03 Arctic White</i>	8.25" x 12.25" x 2.125" 209mm x 312mm x 54mm	6.625" x 10.625" 168mm x 270mm	11.12" x 7.12" 283mm x 181mm
Hang It Mate Trash Bin <i>Part # 560-109 Black</i>	8" x 10" x 13.75" 203mm x 254mm x 350mm		



Innovative & JB Removable

Features

- Hidden fastener
- Removable lids/doors for easy service access
- Easy cut out with 3/8" clearance from start of flange to beginning of screw hole
- Water resistant seal design
- Saralon resin for a lifetime
- Saralon 2 resin Handles with a positive stop and click secured by a 316 SS pin
- *IPS Access Panels
- Design naturally sheds water
- CE Certified - www.imci.org



www.GoToHMG.com



Description OEM Part #/Color	O.D. Standard O.D. Metric	I.D. Standard I.D. Metric	Cut-out Standard Cut-out Metric
12" x 16" Innovative Access Panel <i>Part # 520-605 Polar White</i> <i>Part # 520-603 Arctic White</i>	12.25" x 16" 312mm x 407mm	9.50" x 13.50" 242mm x 343mm	10.50" x 14.25" 267mm x 362mm
12" x 26" Innovative Access Panel <i>Part # 520-625 Polar White</i> <i>Part # 520-623 Arctic White</i>	12.25" x 26" 312mm x 661mm	9.50" x 23.50" 242mm x 597mm	10.50" x 24.25" 267mm x 616mm
11" x 15" JB Service Door <i>Part # 582-1115-05 Polar White</i> <i>Part # 582-1115-04 Arctic White</i>	11" x 15" 280mm x 388mm	8.375" x 12.4375" 213mm x 318mm	9" x 13" 229mm x 331mm
11" x 19" JB Service Door <i>Part # 582-1119-05 Polar White</i> <i>Part # 582-1119-04 Arctic White</i>	11" x 19" 280mm x 486mm	8.375" x 16.4375" 213mm x 420mm	9" x 17" 229mm x 432mm
11" x 23" JB Service Door <i>Part # 582-1123-05 Polar White</i> <i>Part # 582-1123-04 Arctic White</i>	11" x 23" 280mm x 585mm	8.375" x 20.25" 213mm x 515mm	9" x 21" 229mm x 534mm

Part #'s in Black print are standard pack and standard lead-time.

Part #'s in Green print require minimum orders and standard lead-time plus 1-2 weeks.

Part #'s in Red print require minimum orders and extended lead times. Please call for information.



Inspection Plate & Access

Features

- Design naturally sheds water
- Water resistant seal design
- Designed for vertical and horizontal applications
- Hidden fastener design
- UV and weather resistant Saralon resin
- Engineered for the toughest marine elements
- CE Certified - www.imci.org
- Easy Access



www.GoToHMG.com



Description OEM Part #/Color	O.D. Standard O.D. Metric	I.D. Standard I.D. Metric	Cut-out Standard Cut-out Metric
4" Innovative Access Panel <i>Part # 505-105 Polar White</i> <i>Part # 505-103 Arctic White</i>	6" 153mm	3.75" 96mm	4.20" 107mm
6" Innovative Access Panel <i>Part # 505-205 Polar White</i> <i>Part # 505-203 Arctic White</i>	8" 203mm	5.75" 146mm	6.20" 158mm
8" Innovative Access Panel <i>Part # 505-305 Polar White</i> <i>Part # 505-303 Arctic White</i>	10" 254mm	7.75" 197mm	8.20" 209mm
9"x 14" Innovative Access Panel <i>Part # 505-055 Polar White</i> <i>Part # 505-053 Arctic White</i>	9" x 14" 229mm x 356mm	6.75" x 11.60" 172mm x 295mm	7.20" x 12.20" 183mm x 310mm
6" JB Access Cover <i>Part # 585-6-05 Polar White</i> <i>Part # 585-6-04 Arctic White</i>	6" 153mm	n/a	4.625" 118mm
8" JB Access Cover <i>Part # 585-8-05 Polar White</i> <i>Part # 585-8-04 Arctic White</i>	8" 203mm	n/a	6.625" 179mm
6" JB Deck Plate <i>Part # 587-6-05 Polar White</i> <i>Part # 587-6-04 Arctic White</i>	8.75" 223mm	5.125" 131mm	6.25" 159mm
8" JB Deck Plate <i>Part # 587-8-05 Polar White</i> <i>Part # 587-8-04 Arctic White</i>	10.75" 273mm	7.125" 181mm	8.25" 210mm

Part #'s in Black print are standard pack and standard lead-time.

Part #'s in Green print require minimum orders and standard lead-time plus 1-2 weeks.

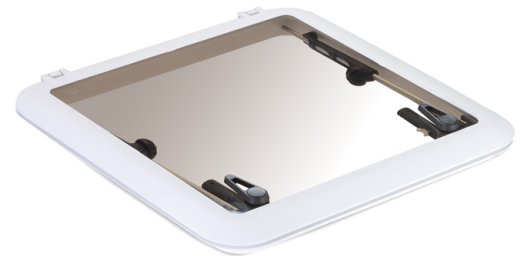
Part #'s in Red print require minimum orders and extended lead times. Please call for information.



Jim Black Escape & Vent Hatches

Features

- Solar Cool Bronze glass to help reduce heat and U.V. transmission
- 1/4" Tempered glass for strength, clarity, and chemical resistance
- UV stable plastic resin Chemical resistant
- 2" Hollow core seal with .500 crush for water resistant product
- Matching trim ring
- CE Certified - www.imci.org
- External handles for emergency escape *with Escape Hatches*



Options:

- Bug Screen
- Privacy Screen



Description OEM Part #/Color	O.D. Standard O.D. Metric	I.D. Standard I.D. Metric	Cut-out Standard Cut-out Metric
10" Round Vent Hatch <i>Part # 591-10RND-05-02SC-05</i> <i>Polar White/SC Bronze Glass</i>	14" 356mm	10.875" 277mm	12.25" 312mm
10" x 10" Vent Hatch <i>Part # 591-1010-05-02SC-05</i> <i>Polar White/SC Bronze Glass</i>	11.75" x 11.75" 299mm x 299mm	9.125" x 9.125" 232mm x 232mm	10.125" x 10.125" 258mm x 258mm
12" x 17" Vent Hatch <i>Part # 591-1217-05-02SC-05</i> <i>Polar White/SC Bronze Glass</i>	15.50" x 20.50" 381mm x 521mm	12.375" x 17.375" 315mm x 442mm	13.50" x 18.50" 343mm x 470mm
20" D-Shape Vent Hatch <i>Part # 591-20D-05-02SC-05</i> <i>Polar White/SC Bronze Glass</i>	13" x 23" 331mm x 585mm	9.75" x 19.75" 248mm x 502mm	11" x 20" 280mm x 508mm
16" x 16" Escape Hatch <i>Part # 592-1616-05-02SC-05</i> <i>Polar White/SC Bronze Glass</i>	19.50" x 19.50" 496mm x 496mm	16.375" x 16.375" 416mm x 416mm	17.50" x 17.50" 445mm x 445mm
18" x 18" Escape Hatch <i>Part # 592-1818-05-02SC-05</i> <i>Polar White/SC Bronze Glass</i>	21" x 21" 534mm x 534mm	17.625" x 17.625" 448mm x 448mm	19" x 19" 483mm x 483mm
19" x 19" Escape Hatch <i>Part # 592-1919-05-02SC-05</i> <i>Polar White/SC Bronze Glass</i>	22.625" x 22.625" 575mm x 575mm	19.25" x 19.25" 489mm x 489mm	20.50" x 20.50" 521mm x 521mm
20RND Escape Hatch <i>Part # 592-20RND-05-02SC-05</i> <i>Polar White/SC Bronze Glass</i>	22.50" 572mm	19.25" 489mm	20.50" 521mm

Part #'s in Black print are standard pack and standard lead-time.

Part #'s in Green print require minimum orders and standard lead-time plus 1-2 weeks.

Part #'s in Red print require minimum orders and extended lead times. Please call for information.



Jim Black Port Lights

Features

- UV Stable Plastic Resin
- Chemical resistant
- Custom seal for water resistant product
- 1/4" Temper glass for strength, clarity, and chemical resistance
- CE Certified - www.imci.org
- Trim Ring included
- Bug Screen Included



www.GoToHMG.com



Description OEM Part #/Color	O.D. Standard O.D. Metric	I.D. Standard I.D. Metric	Cut-out Standard Cut-out Metric
3" x 10" JB Rectangular Port Lights Part # 593-310-05-02-01-1.00 <i>Polar White/Bronze Glass</i>	5.75" x 12.50" 146mm x 318mm	3" x 10" 76mm x 254mm	Per Flange
4" x 14" JB Rectangular Port Lights Part # 593-414-05-02-01-1.00 <i>Polar White/Bronze Glass</i>	6.625" x 16.25" 169mm x 413mm	4" x 13.50" 102mm x 343mm	Per Flange
3" x 15" JB Elliptical Port Lights Part # 593-315-05-02-02-.750 Part # 593-315-05-02-02-1.750 <i>Polar White/Bronze Glass</i>	6.25" x 18.25" 159mm x 464mm	3" x 15" 77mm x 381mm	Per Flange
5" x 18" JB Elliptical Port Lights Part # 593-518-05-02-02-1.00 Part # 593-518-05-02-02-1.375 <i>Polar White/Bronze Glass</i>	8.625" x 21.75" 220mm x 553mm	5.375" x 18" 137mm x 458mm	Per Flange
6" x 16" JB Elliptical Port Lights Part # 593-616-05-02-02-1.375 <i>Polar White/Bronze Glass</i>	7.875" x 18.50" 201mm x 470mm	5" x 16.25" 127mm x 413mm	Per Flange

Part #'s in Black print are standard pack and standard lead-time.

Part #'s in Green print require minimum orders and standard lead-time plus 1-2 weeks.

Part #'s in Red print require minimum orders and extended lead times. Please call for information.

INNOVATIVE & JIM BLACK ACCESSORIES AND REPLACEMENT PARTS



Innovative Door Handle Replacement Kit

Polar White	Part # IPS HNDLASSM PW
Arctic White	Part # IPS HNDLASSM AW
Marine White	Part # IPS HNDLASSM MW
Dream White	Part # IPS HNDLASSM DW
Dolphin Gray	Part # IPS HNDLASSM DG
Black	Part # IPS HNDLASSM BK
316 Stainless Steel	Part # IPS HNDLASSM SS



Innovative Door Seal

.276 Diameter 6' Length	Part # Seal Kit 276
.180 Diameter 6' Length	Part # Seal Kit 180



Jim Black Door Handle Replacement Kit

Polar White	Part # 595-HNDL Kit -PW
Arctic White	Part # 595-HNDL Kit -AW
Marine White	Part # 595-HNDL Kit -MW
Dream White	Part # 595-HNDL Kit -DW
Dolphin Gray	Part # 595-HNDL Kit -DG
Black	Part # 595-HNDL Kit -BK



Jim Black Ventilation Hatch Handle

Right Hand	Part # 595-VHKRH
Left Hand	Part # 595-VHKLH



Jim Black Escape Hatch Handle

Locking	Part # 595-EHKL
Non-locking	Part # 595-EHKNL



Jim Black Hatch Seal 6' Length

Part # 595-HTSEAL

Jim Black Port Light Seal 6' Length

Part # 595-PTSEAL

Jim Black Door Seal 6' Length

Part # 595-DRSEAL



Jim Black Bug Screen

(10"x10")	Part # 595-1010-SCN-09
(10" Round)	Part # 595-10RND-SCN-09
(12"x17")	Part # 595-1217-SCN-09
(20" D-Shape)	Part # 595-20D-SCN-09
(16"x16")	Part # 595-1616-SCN-09
(18"x18")	Part # 595-1818-SCN-09
(19"x19")	Part # 595-1919-SCN-09
(20" Round)	Part # 595-20RND-SCN-09



Jim Black Privacy Screens

(10"x10")	Part # 595-1010-PRVSCN-09
(10" Round)	Part # 595-10RND-PRVSCN-09
(12"x17")	Part # 595-1217-PRVSCN-09
(20" D-Shape)	Part # 595-20D-PRVSCN-09
(16"x16")	Part # 595-1616-PRVSCN-09
(18"x18")	Part # 595-1818-PRVSCN-09
(19"x19")	Part # 595-1919-PRVSCN-09
(20" Round)	Part # 595-20RND-PRVSCN-09



Jim Black Ventilation Hatch Adjuster Arm Kits

(10"x10")	Part # 595-VAK1010
(10" Round)	Part # 595-VAK10RND
(12"x17")	Part # 595-VAK1217
(20" D-Shape)	Part # 595-VAK20D
(16"x16")	Part # 595-VAK1616
(18"x18")	Part # 595-VAK1818
(19"x19")	Part # 595-VAK1919

Jim Black Escape Hatch Adjuster Arm Kits

(16"x16")	Part # 595-EAK1616
(18"x18")	Part # 595-EAK1818
(19"x19")	Part # 595-EAK1919
(20" Round)	Part # 595-EAK20RND



Part #'s in Black print are standard pack and standard lead-time.

Part #'s in Green print require minimum orders and standard lead-time plus 1-2 weeks.

Part #'s in Red print require minimum orders and extended lead times. Please call for information.

For replacement parts, please visit our web-site or contact us through customer service at info@gotohmg.com

Plotting a course to success by providing quality craftsmanship and premier customer service.

www.GoToHMG.com